

## Global OE Partners





PS71

HS51

Max. Performance

ECSTA PS71

A sports performance tire delivering true driving refinement. Provides fine and stable driving with superb handling and braking performance on wet and dry surfaces.



- 01

4 WIDE GROOVE

Maximised tire contact area through an optimised tread design. 4 main wide grooves direct water drainage out of the tread area.
- 02

OPTIMISED BLOCK DESIGN

Improvement of dry road performance & high speed stability.
- 03

OPTIMUM SHAPE DRAWING RIB BY EACH

Upgrade of wet grip, wear out performance.

Harmony UHP

ECSTA HS51

Designed to balance performance and comfort with precision handling and braking combined with smoothness.



- 01

TIRE DESIGN

Improved braking in the wet and a centralised ribbed pattern design reinforces tread stiffness and stability.
- 02

WIDE LATERAL GROOVES

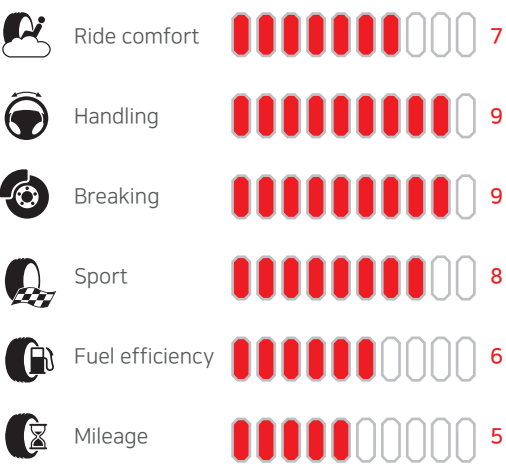
The 4 wide linear grooves maximises water displacement when turning.
- 03

CLOSED AND NOTCH SHOULDER

Handling performance has been improved due to the strengthened shoulder block.



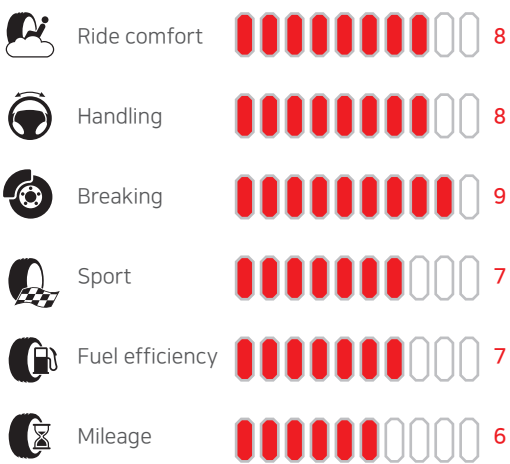
PERFORMANCE



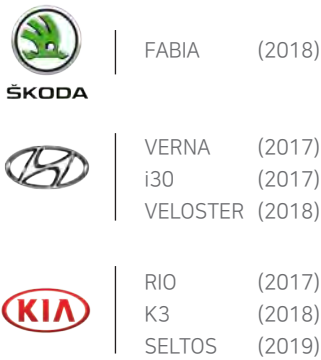
OE  
(ORIGINAL EQUIPMENT)



PERFORMANCE



OE  
(ORIGINAL EQUIPMENT)









KL33

Premium Comfort

CRUGEN Premium

A premium SUV tire offering high quality control and optimum handling in on-road conditions.



SUV



Touring

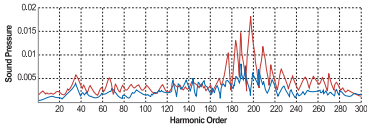


Performance

01

LOW NOISE AND PREMIUM COMFORT PERFORMANCE

Optimum tread pitch design reduces road harmonics and provides better comfort performance.



02

DIFFERENCE PITCH DRAWING OF CENTER & SHOULDER BLOCK

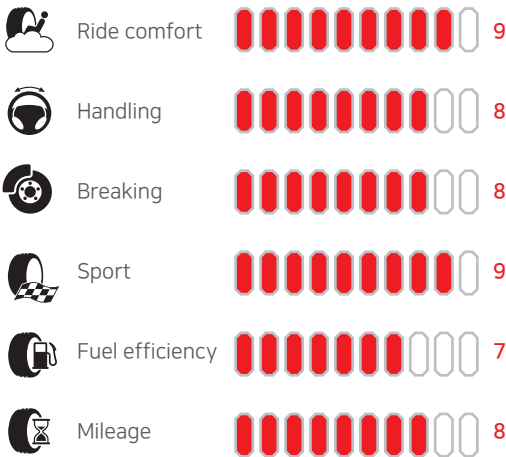
Improvement of block stiffness and driving stability.

03

IMPROVED TRACTION PERFORMANCE

Semi-knurling and 3D tread block design results in improved snow and wet traction.

PERFORMANCE



OE  
(ORIGINAL EQUIPMENT)

	Audi	Q5	(2020)
	Hyundai	SANTAFE	(2018)
		TUCSON	(2015)
	Kia	SPORTAGE	(2015)
		SORENTO	(2014)
		CARNIVAL	(2014)
	Renault	KOLEOS	(2018)
	SsangYong	REXTON SPORTS	(2017)

OE SUPPLY LIST

Model	Product	Model	Product
AUDI		HYUNDAI	
Q5	KL33 235/55 R19 2020	SANTAFE	HP91 235/60 R18 2018
			KL33 235/60 R18 2018
		TUCSON	KL33 225/60 R17 2015
		KONA	PS31 235/45 ZR18 2020
		SONATA	TA91 235/45 R18 2019
		AVANTE	HS51 225/45 R17 2015
			KH27 205/55 R16 2015
		VELOSTER	HS51 215/45 R17 2018
		IONIC	TA31 225/45 R17 2016
		i30	KH27 205/55 R16 2017
			HS51 225/45 R17 2017
		i20	KH27 185/70 R14 2018
		i10	KH27 185/55 R15 2019
Mercedes-Benz		KIA	
G-CLASS	KL21 265/60 R18 2013	CARNIVAL	KL33 235/60 R18 2014
SPRINTER	HT51 245/75 R16 2019	SORENTO	HP91 235/55 R19 2014
			KL33 235/55 R19 2014
Volkswagen		SPORTAGE	KL33 225/60 R17 2015
ATLAS	HP91 255/50 R20 2017	SELTOS	HS51 205/60 R16 2019
	HP91 245/60 R18 2017		HS51 215/55 R17 2019
POLO	KH27 185/65 R15 2014		HS51 235/45 R18 2019
	ES31 185/65 R15 2019	NIRO	TA31 205/60 R16 2016
			TA31 225/45 R18 2016
SKODA		K9	KU39 245/50 R18 2018
FABIA	KH27 185/60 R15 2014	K7	KU39 225/55 R17 2016
	HS51 215/45 R16 2018	OPTIMA	TA31 215/55 R17 2019
OCTAVIA	PS71 205/60 R16 2020	K3	HS51 225/45 R17 2018
		RIO	KH27 185/65 R15 2016
SEAT		MORNING	KH27 185/55 R15 2017
IBIZA	ES31 185/65 R15 2019	SSANGYONG	
		KORANDO	HP71 235/55 R18 2019
RENAULT / DACIA		REXTON SPORTS	KL33 255/50 R20 2017
DOKKER	ES31 185/65 R15 2020	RENAULT	
GM		KOLEOS	HP91 225/60 R18 2019
AVEO	KH17 185/60 R14 2016	CAPTUR	ES31 215/55 R18 2020
SPARK	TA31 185/55 R15 2015		

● OE Supply status listed above is current as at 02.2020 and is subject to change.  
● The above products have been supplied on some of the selected vehicle models shown.  
● The above list may be updated as more OE fitments are announced for 2020.